

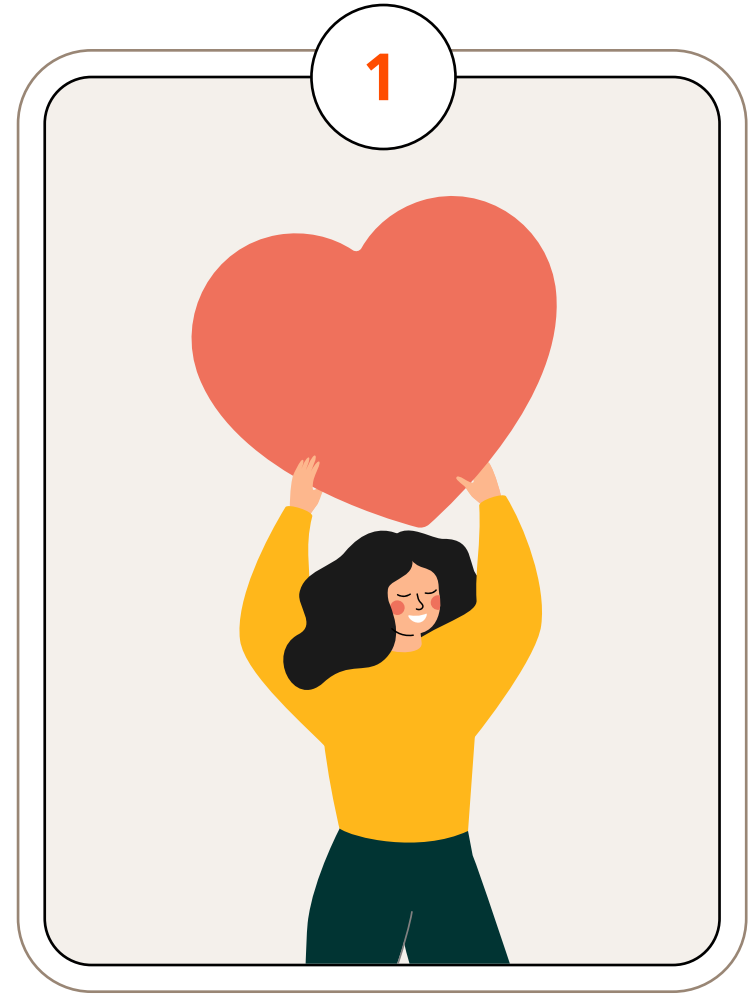
Tote Board Community Health Fund (TBCHF)

FY2020 to FY2024

TBCHF is designed as a seed fund for social service agencies or non-profit organisations to **pilot innovative programmes for the Community Care sector**



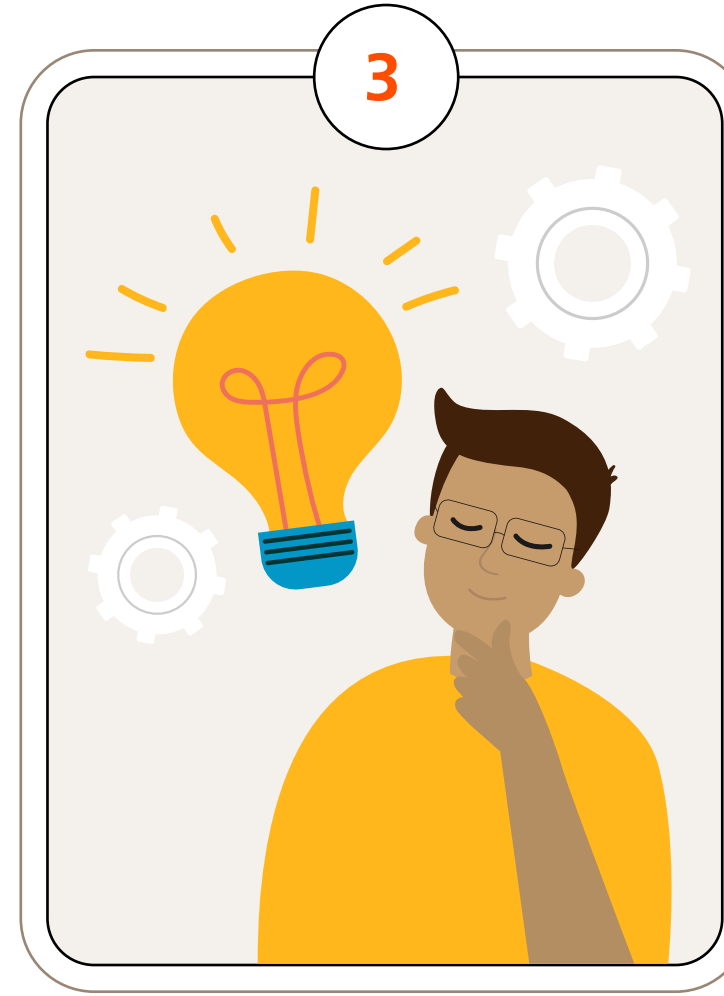
Three Key Priorities



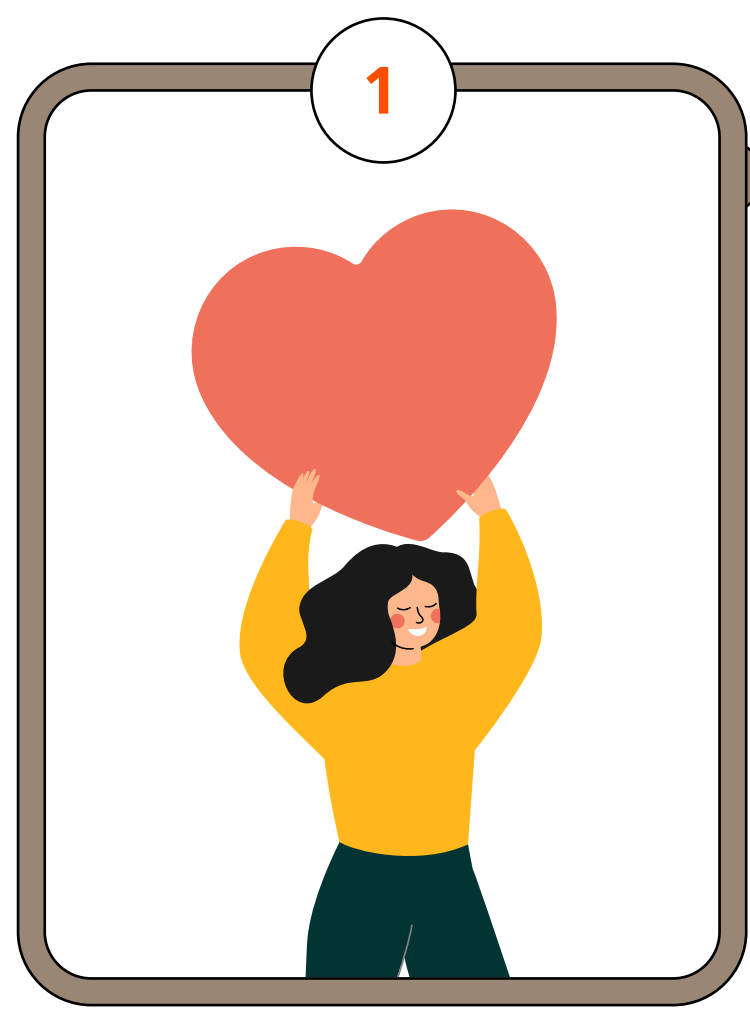
Care and Support



Care Integration



Emerging Areas



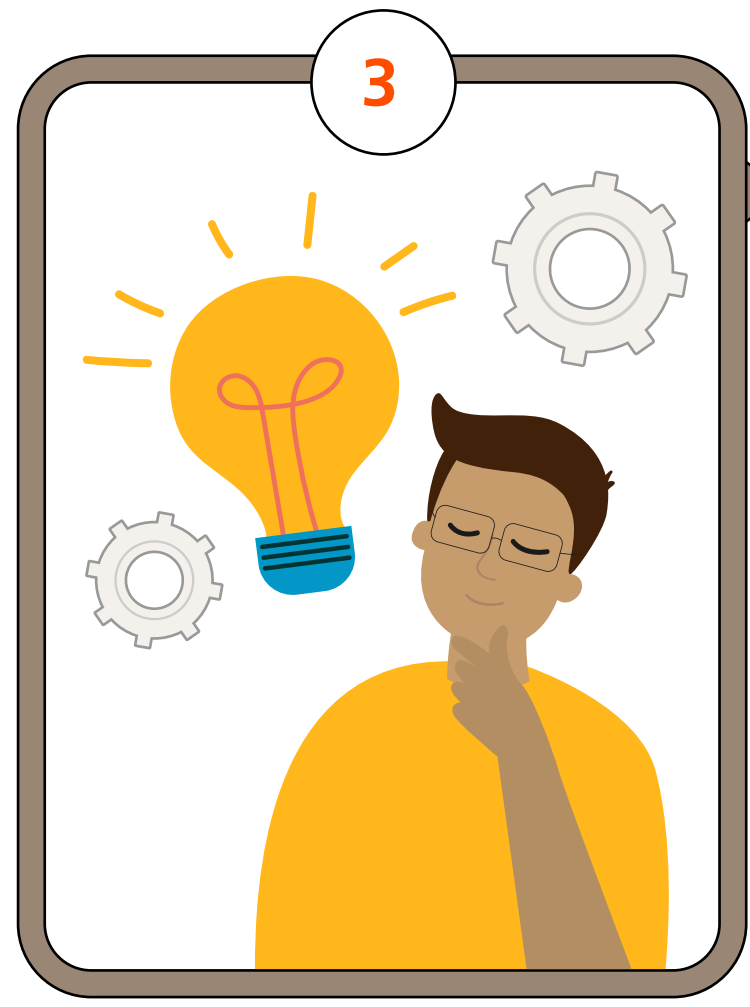
Care and Support

- ✓ Spark the next shift in caring for seniors outside of hospitals via new care models
- ✓ Enable more seniors to age in place in the community through re-ablement
- ✓ Support niche groups of caregivers
- ✓ Adopt a whole-of-community approach in providing care for the population



Care Integration

- ✓ Coordinate and integrate care in the community, especially between the social and healthcare sectors
- ✓ Integrate care to serve the needs of seniors as and when their condition changes
- ✓ Establish linkages between social and healthcare providers, and build the capability of providers to expand their scope to provide integrated services



Emerging Areas

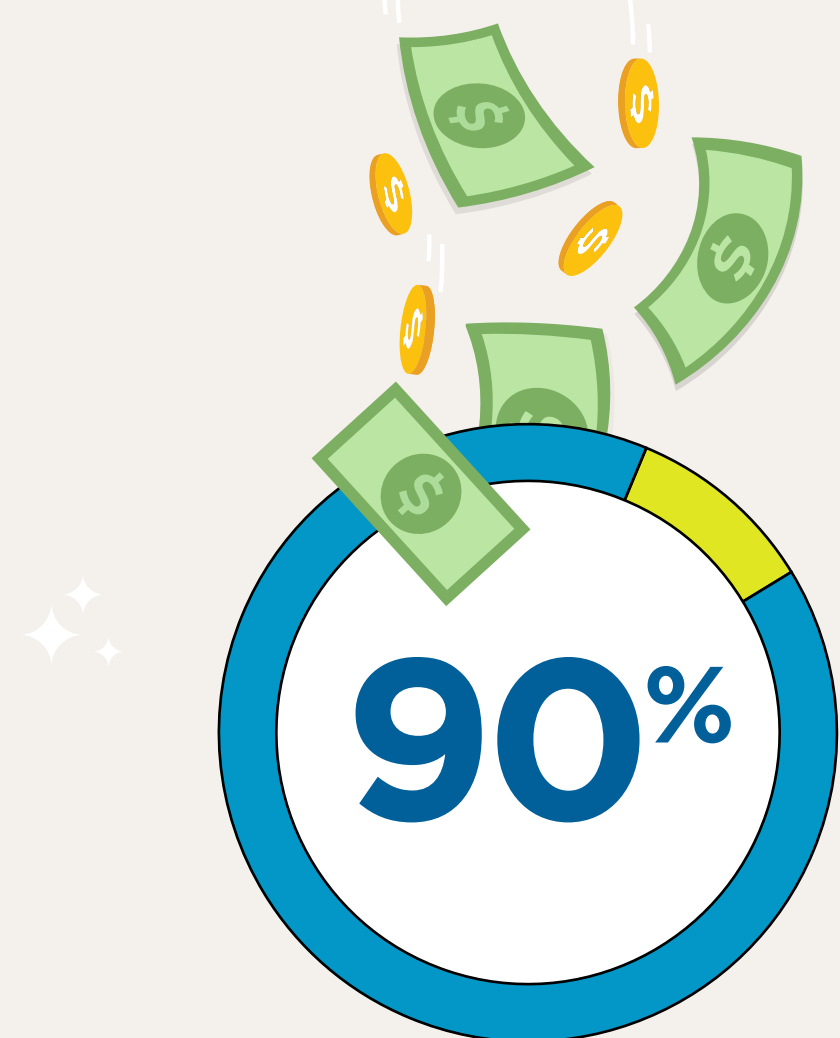
- ✓ Identify new priorities as the sector evolves

Eligibility (Critical Criterion)

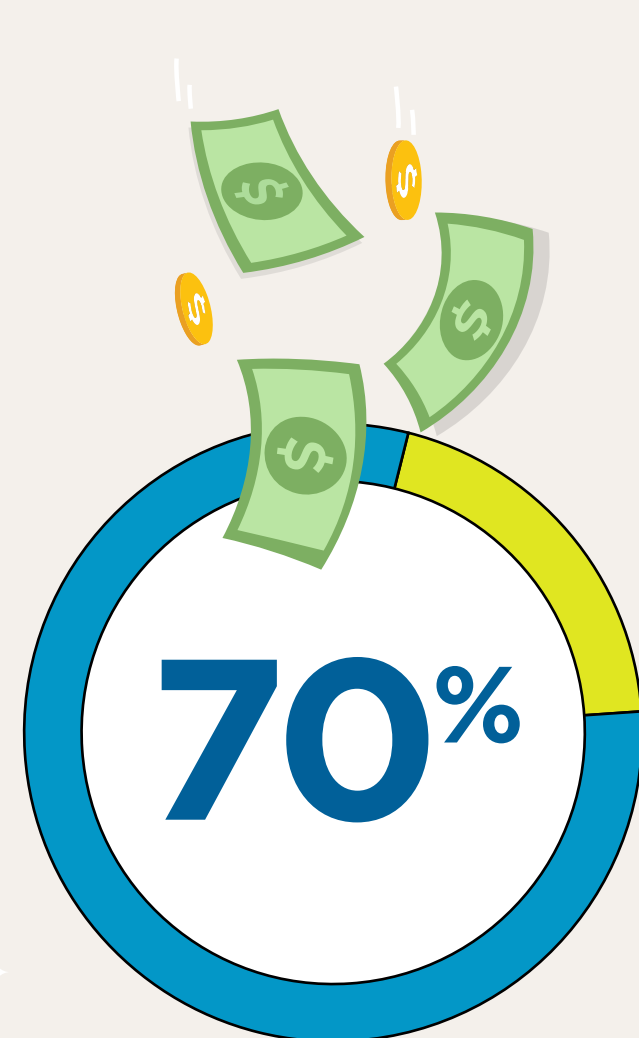
Co-operatives	Government Agencies	Grassroots Organisations	Non-Profit Organisations (companies limited by guarantee, charity trusts and societies) or Social Service Agencies
Private Service Providers that serve subsidised clients	Public Healthcare Institutions	Regional Healthcare Systems	Social Enterprises which are members of the Singapore Centre for Social Enterprise

Note: Eligible organisations and institutions must have General Reserves not more than 3 years of Total Operating Expenditure

Funding



90% of total operating expenditure if programme serves an unmet need and uses a **new method or approach** which aims to achieve transformative impact in the landscape.



70% of total operating expenditure if programme serves an unmet need and is an **existing service model** rolled out to a new target group.

Application

Email tbchf@aic.sg to learn more about TBCHF or share with us your programme synopsis.

WHAT

are the needs and gaps that your programme is trying to meet?

HOW

is the programme currently funded (if any) and are other funding avenues being sought?

WHAT

are the deliverables and learning outcomes?

WHAT

is the proposed solution?

WHO

are the targeted beneficiaries?

WHAT

is the funding request and duration?